

SPECIFICATION OF DDW240/70

Dimensions/ Weight

Length/Width/Height	12700*2500*3250 mm
Entry angle	13-15°
Machine weight	35 ton

Operator station

Cabin	Full closed, climate control with A/C
Rotation	0-90°
Control system	Electronic & hyd
Operation controls	Joysticks * 2

Engine

Make	Cummins
Rated power	410 KW
Rated speed	1900 rpm
Fuel tank capacity	500 L

Hydraulic system

Max pressure (rotary & carriage)	40 Mpa
Max pressure (control sys.)	35 Mpa
Hydraulic tank capacity	780 L

Under carriage

Structure	Box welded frame,
Travel	Self-propelled on track crawler
Travel speed	0-1.5 km/h, forward & reverse
Track	Steel type
Track plate width	500 mm
Rear stabilizer	2

Drill mast

Transmission type	Rack & pinion
Rod support	Yes
Hose carrier	Full length of chain type
Setup mode	Cylinder type

Rotary drive

Rotary torque	70000 N.M
Rotary speed	90 r/min
Transmission	Gear box

Carriage

Maximum thrust/pullback force	2400 KN
Max travel speed	48 m/min
Max travel distance	6.7 m

Stake down

Anchoring type	Manual anchoring
Hole nos	4

Wrench assembly

Type	Clamp jaw
Max breakout torque	170000 Nm
Thread greasing	Automatic

Pipe loader

Type	One rod type pipe loader
------	--------------------------

Crane

Lifting capacity	3.2 ton
Control	Out doors

Drill pipe

Type	φ 127*6000 mm
Thread	NC50

Tools

Back reamer	730, 820, 920, 1050, 1200, 1400 mm
-------------	------------------------------------

※ Specifications for reference only subject to change prior to notice. ※

VARIETY OF USEFUL DOWN HOLE EQUIPMENT SUPPLIES



Special make drill pipe



Mud mixing & recycling



Cutting type Backreamer



Cone type Backreamer



Beacon housing & drill bit



F5 & Transmitter



Paratrack 2

DW/TXS CONSTRUCTION EQUIPMENT (BEI JING) CO., LTD.

No.6, Huoxing Fifth Street, Huo County Development Area Tongzhou District, Beijing, China.

Postal code: 101109 Tel: +86 10 80582365 Fax: +86 10 80582515 Web: www.dwtxs.cn Email: feishubing@dwtxs.com



DDW240/70

HORIZONTAL DIRECTIONAL DRILL

DW/TXS CONSTRUCTION EQUIPMENT (BEI JING) CO.,LTD.

DWTKS

MASTER OF DRILL RIGS!



**PULL FORCE: 240 TON
TORQUE: 70000 NM**

DDW240/70

MACHINE MAKE YOU FEEL CONFIDENT!



Broad anchoring board and rear supporting beam connected by the wire rope to give a stable anchoring during the maximum force pulling.

Movable clamping, level adjusting pipe loader, onboard lifting crane, all these equipment make sure the rig can give a safe and efficient pipe handling work on the rig.

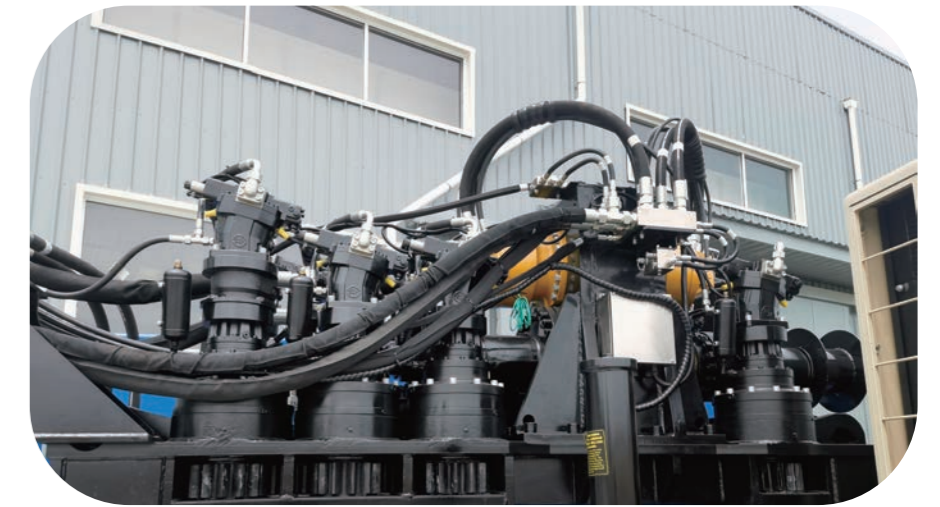
Dual rod supporter on the anti-mud slippery beam let the rod even and stable before threaded into the shaft.



Steel track chassis equipped with individual engine for rig movement so the machine can be transit by itself and no need other traction for the short distance running.



Double cylinder jacking with sliding rack and mast to setting the optimal angle for a stable and efficient drilling.



INSTALLATION OF PRODUCT PIPE!



WELL PREPARED MEANS
HIGH PERFORMANCE!



HIGH PERFORMANCE!