

SPECIFICATION OF DDW22/08SE

Dimensions/ Weight

Length/Width/Height	6400*2210*2420 mm
Entry angle	14-19°
Total weight	8 ton

Operator station

Cabin	Full closed, climate control with A/C
Rotational console	0-90°
Control system	Electronic & hyd
Operation controls	Joystick 2

Engine

Make	Cummins
Rated power	112 KW
Rated speed	2200 rpm
Fuel tank capacity	160 L

Hydraulic system

Max pressure (rotary & carriage)	40 Mpa
Max pressure (control sys.)	20 Mpa
Hydraulic tank capacity	400 L

Under carriage

Structure	Box welded frame, Self-propelled on track crawler
Travel	0-2.7 km/h, forward & reverse
Travel speed	Steel type with rubber pad
Track	320 mm
Track width	2
Rear stabilizer	

Drill mast

Transmission type	Rack & pinion
Hose carrier	Full length of chain type
Setup mode	Double cylinder

Rotary drive

Rotary torque	7000/4500/2500 N.M
Rotary speed	95/125/188 r/min
Transmission	Gear box

Carriage

Maximum thrust/pullback force	200 KN
Max travel speed	62 m/min
Max travel distance	3.5 m

Wrench assembly

Type	Clamp jaw
Max breakout torque	15000 Nm
Thread greasing	Automatic

Stake down

Anchoring type	Hydraulic double anchors
Hole nos	2

Pipe loader

Type	Automatic pipe feeding
Rod box capacity	48

Mud pump

Type	On board
Volume	300 L/min
Maximum pressure	8 Mpa
Gear shift	Automatic

Drill pipe

Type	Φ60*3048 mm
Thread	D24

Tools

Back reamer Diameter	300, 400, 500, 600, 700, 800 mm
----------------------	---------------------------------

※ Specifications for reference only subject to change prior to notice. ※

VARIETY OF USEFUL DOWN HOLE EQUIPMENT SUPPLIES



Special make drill pipe



Mud mixing & recycling



Cutting type Backreamer



Cone type Backreamer



Beacon housing & drill bit



F5 & Transmitter



Paratrack 2

DW/TXS CONSTRUCTION EQUIPMENT (BEI JING) CO., LTD.

No.6, Huoxing Fifth Street, Huo County Development Area Tongzhou District, Beijing, China.

Postal code: 101109 Tel: +86 10 80582365 Fax: +86 10 80582515 Web: www.dwtxs.cn Email: feishubing@dwtxs.com

DW/TXS



DDW22/08SE

HORIZONTAL DIRECTIONAL DRILL

DW/TXS CONSTRUCTION EQUIPMENT (BEI JING) CO.,LTD.

DWTXS



TRENCHLESS TECHNOLOGIES!

HDD MACHINES!

Closed circuit hydraulic for rotation and thrust, with dual motor rotation for a stable and safe drill work.

Drilling data packed all-in-one showing in the coloured screen so the operator can have a full idea of his work.

Automatic pump of gear shifting covered by hood works in a smart way for a economical and environmental drill.

Seat switch and Strike alert system, makes it a total safe smart work unit.

DDW22/08SE

DWTXS



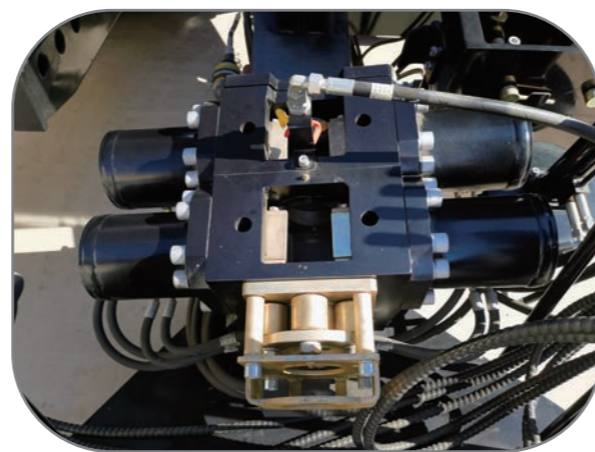
FLUID PUMP

Drilling fluid pump of gear shifting covered by hood works in a smart way for a economical and environmental drill.



SERVICE

Broad opening of the engine and hydraulic system for a most easy service and check up during the operation of any tough jobs by the operator.



POWERFUL UNIT!



PULL FORCE: 20 TON TORQUE: 7000 NM

DWTKS



RIGHT ANSWER FOR HDD JOB!

DWTKS

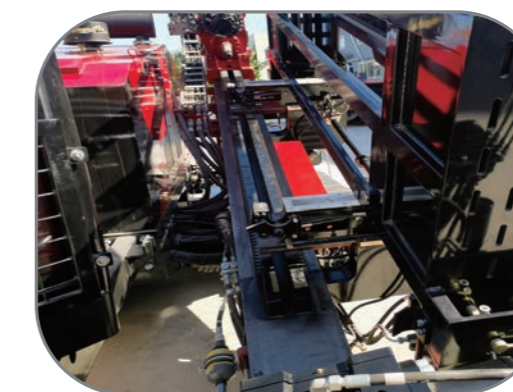
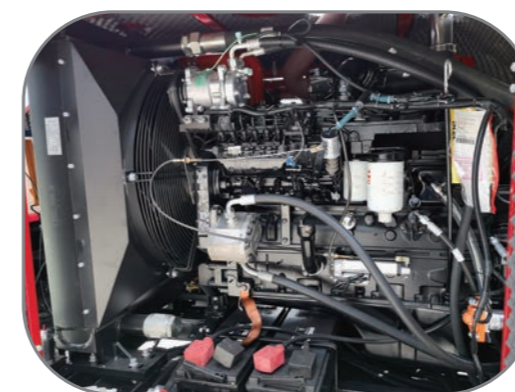


OPERATOR CABIN

Fully enclosed cab offers premium operator comfort and complete climate control.

ENGINE

Diesel engine power pack provide long lasting and consistent power for carriage and rotation at any difficult drill time.



WE KNOW IT!